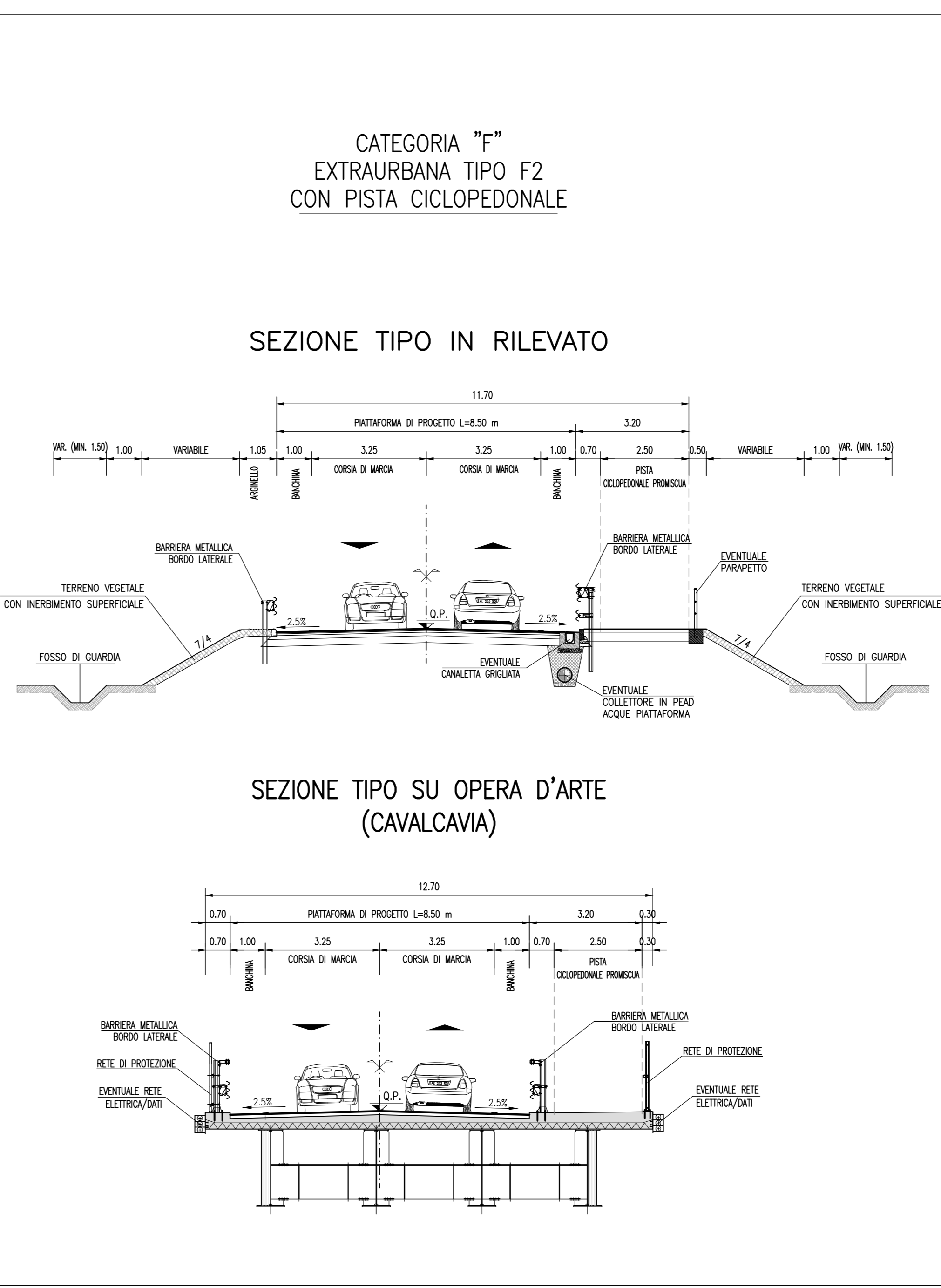
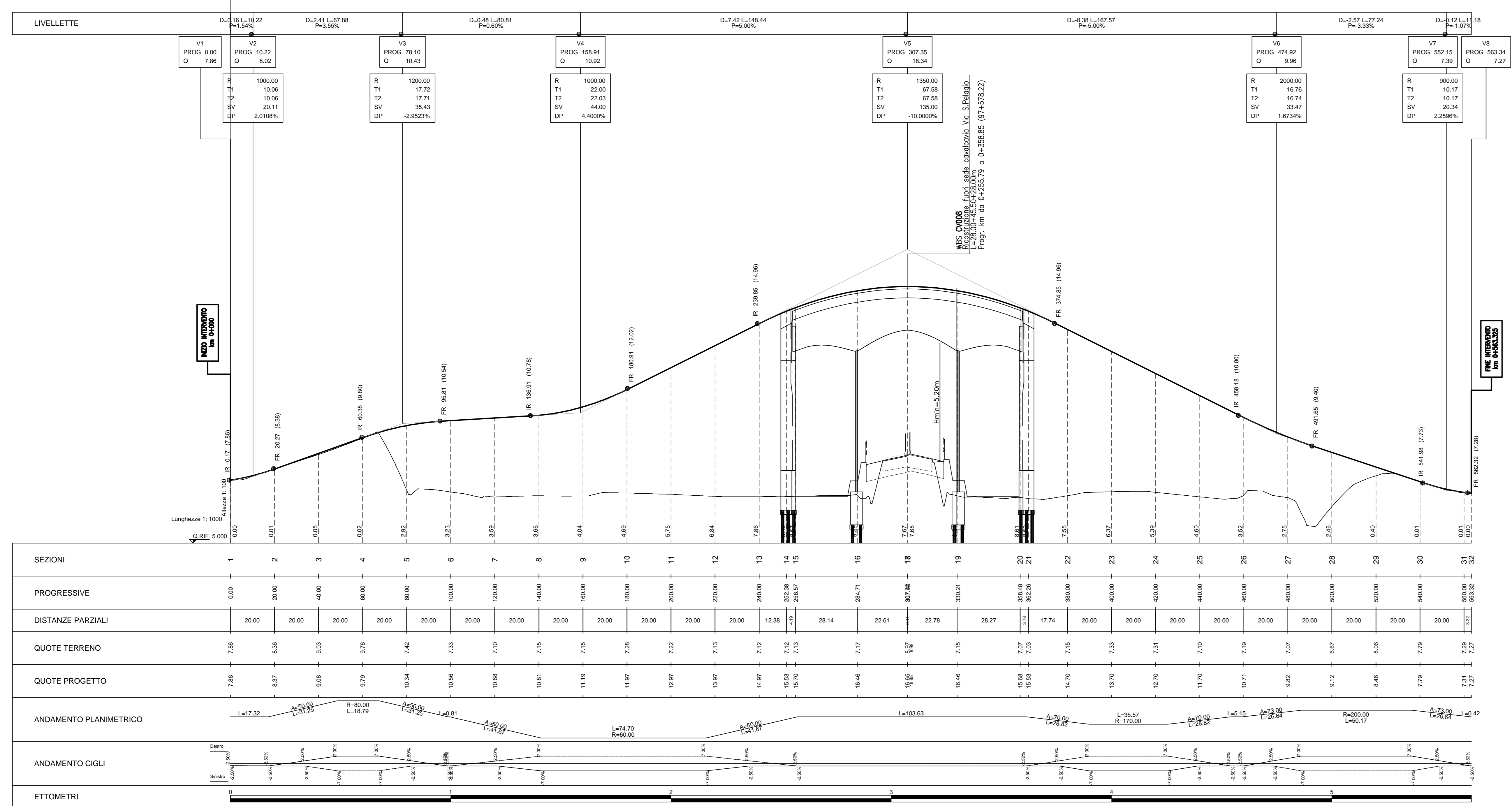
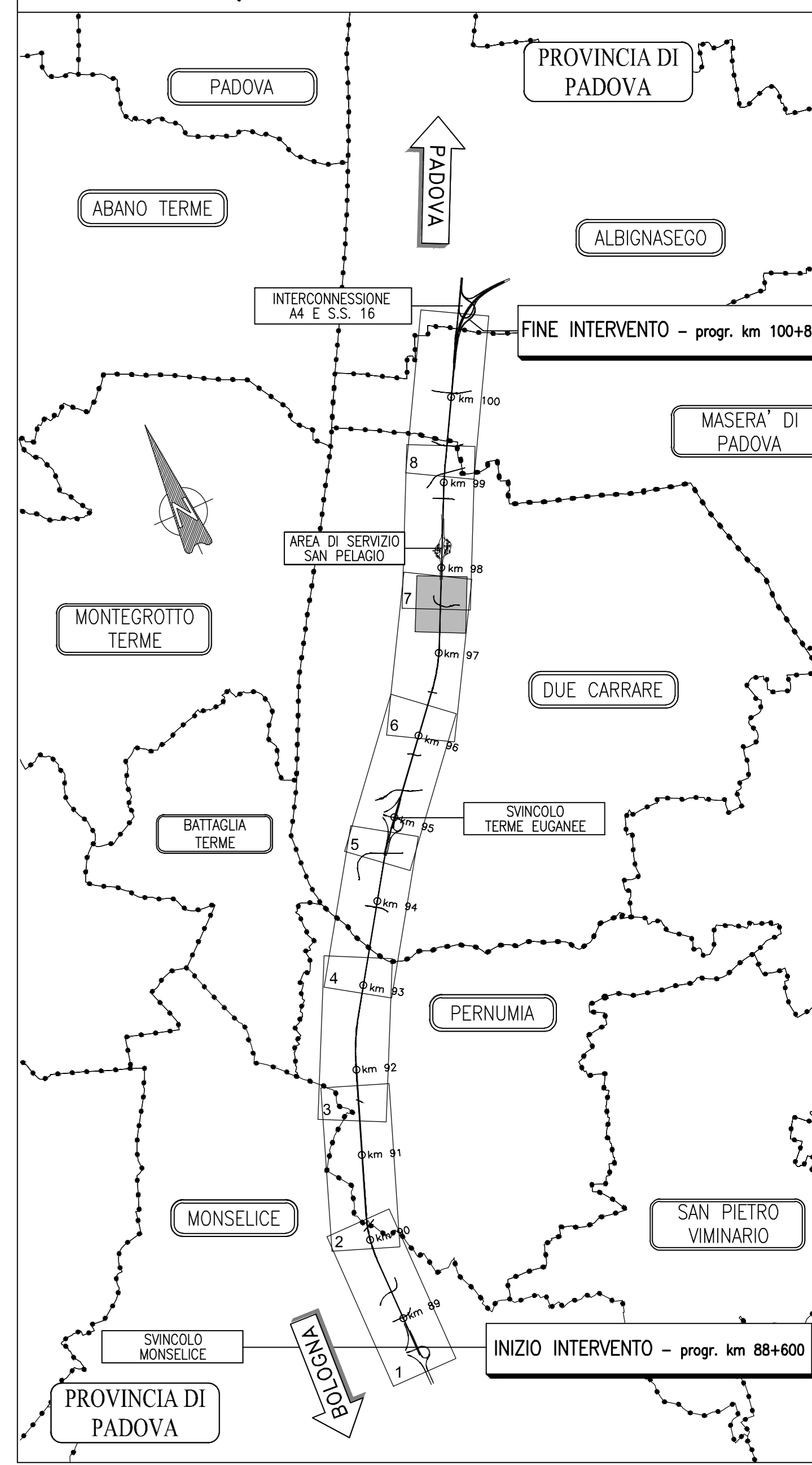


Table with columns for stationing (e.g., V1, V2, V3, V4, V5, V6, V7, V8), vertical curve data (A, L, T, TI, TC), and horizontal curve data (R, T, TI, TC). Includes labels like 'C19', 'C20', 'C21', 'C22'.



Project information block including 'autostrade per l'italia' logo, project name 'AUTOSTRADA (A13) : BOLOGNA-PADOVA', location 'AMPIAMENTO ALLA TERZA CORSIA TRATTO : MONSELICE - PADOVA SUD', project status 'PROGETTO DEFINITIVO', and 'VIABILITA' INTERFERITE' section for 'CV008 - Via S. Pelagio - Progr. km 97+578'. Includes a table of technical staff and project dates.